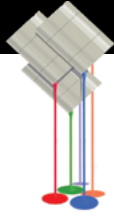


Cranberry Artists Network

NEWSLETTER

MAY/JUNE 2024

CRANBERRY ARTISTS NETWORK CALL FOR ENTRIES



2024 Martinis with Monet Art Expo

All regional artists are invited to enter up to two pieces of original art into the 2024 Martinis with Monet Art Expo. Martinis with Monet is a well-attended and publicized event that is the highlight of the summer season in Cranberry Township every year. This exhibit showcases the enormous skill and talent of a broad range of regional artists.

SHOW DATES:

Wednesday, July 10 - Thursday, August 22, 2024

OPENING RECEPTION:

Wednesday, July 10, 2024, 7:00-9:00 p.m.

The Exhibition Space: The Cranberry Township Municipal building, located at 2525 Rochester Road, Cranberry Township, PA 16066.

Juror of Awards: Leslie Rose, Curatorial Research Assistant, Contemporary Art, Baltimore Museum of Art.

Awards: Cranberry Artists Network will provide Certificates of Excellence awards for First, Second, Third and Honorable Mentions, along with over \$1,000 in cash awards.

Registration:

- Entrance fee for up to 2 pieces of art is \$20 for members of CAN and \$25 for non-members.
- For all entries, please make the payment through our website: www.cranberryartistsnetwork.com/2024monet - PayPal or Credit Card payment accepted. Deadline is **Sunday, June 23 at 8:59 p.m.**
- No registration payments will be accepted during the drop off.

Entry Regulations:

- Artists are permitted to submit 1-2 pieces of art for entry in any medium (except film or video and installations).
- Artists must be located within a 150-mile radius of Cranberry Township.
- Artwork must have been produced within the last 3 years and not have previously been shown in Cranberry Township.
- Original Artwork only (no reproductions).
- 2-D works must be professionally presented and ready to hang. No sawtooth hangers, picture wire and mounting hardware securely attached to frame only, not the backing. Pieces with unsecure wiring will be rejected at drop-off.
- 3-D works must be exhibit ready.
- Size limitations – 36" W x 50" H including frame. Please note: these dimensions are absolute, artwork & frame wider than 36" will be rejected.
- Please note: these dimensions must include the frame for paintings. The depth dimensions for sculptures, ceramics, pottery and tapestries

must be smaller than 36". Any artwork that does not comply will be rejected.

- All work must have 2 registration tags attached to the back of the work upon delivery. (See page 2 of the prospectus for registration tags.)
- Digital registration only.
- All entries must be accompanied by a clear, focused picture of the submitted artwork.
- Entry pictures must be in JPEG format with at least 72dpi and should not exceed 5MB.

Notification of Acceptance

- Notification of acceptance will be sent via email on or about **Sunday, June 30, 2024.**

Drop Off:

- Accepted artwork must be dropped off to be hung on **Wednesday, July 3, 2024** between 4 and 7pm at the Municipal Center.
- **Artwork must hang for the duration of the show.**

Pick Up:

- Artwork must be picked up on **Thursday, August 22, 2024 between 4 p.m. and 7 p.m.** at the Municipal Center. Artwork not picked up within the scheduled return date will be placed in storage at the artist's risk and expense. A \$25 storage fee will be assessed. Artworks remaining after 30 days become the property of CAN.

Disclaimer: The Cranberry Township Municipal Center is a public space. Cranberry Artists Network and the Cranberry Township Municipal Center will take reasonable precautions to prevent damage, theft or loss of artwork, but will not be held responsible for the aforementioned. By submitting artwork into the show, the artist agrees to these terms.

Sales: Cranberry Artists Network will conduct all sales during the exhibition. Artists retain 80% of the sale. Cranberry Artists Network retains the right to use art images for any promotional materials.



Cranberry Artists Network

Submitting artworks to shows

When submitting artwork to shows please make sure to follow the instructions in the prospectus for criteria specific to the show, such as size/weight restrictions, date of creation etc.

Online submission of photos of artwork for jury selection:

When registering artwork for jury consideration please make sure to have clear, focused, well framed photos of your artwork. Photos should mainly contain the artwork (crop to artwork), properly aligned.

Artwork drop-off:

These guidelines must be followed when dropping-off artwork for a show:

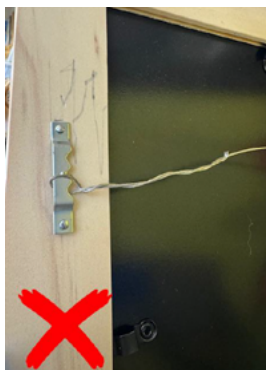
2D pieces

- Artwork must be ready to hang
- Artwork must be within size limitations including frame
- Frame is secure and clean, front and back
- A wire must be securely attached to the actual frame, not the frame backer board.
Note: No sawtooth hangers. If artwork comes with a sawtooth hanger, it will be rejected

Correct examples:



These examples are unacceptable:



Cranberry Artists Network

3D pieces

- Artwork must be ready for display, stable and secure
- Artwork must be within size limitations
- Hangable 3D work should be submitted with necessary hanging wire securely attached to the piece
- Stands or display fixtures provided by artist (if needed)

Examples:



Any submitted artwork not following the above guidelines will be rejected at dropoff



2024 Martinis with Monet Art Expo Juror Leslie Rose

Leslie Rose (she/her) is currently the Joyce J. Scott Curatorial Research Assistant at the Baltimore Museum of Art, working on the 50-year career retrospective exhibition *Joyce J. Scott: Walk a Mile in My Dreams* (March 24-Jul 14 2024). Before she arrived at the BMA, Ms. Rose worked in several institutions, including the Andy Warhol Museum, Yale University Art Gallery, Yale Center for British Art, and the Smithsonian Museum of African American History and Culture. Ms. Rose received her Master of Arts in African Studies from Yale University in 2021 and her Bachelor of Arts in the History of Art and Architecture from the University of Pittsburgh in 2017. Her Master's thesis focused on Contemporary African Diasporic art, the history and legacy of transatlantic slavery, performance, and museum interventions.





The Mars Area Public Library is pleased to continue its collaboration with the Cranberry Artists Network to provide art works for the Art in the Library program.

Drop off deadline for new work will be June 14 during regular library hours.

Works should not exceed 33 - 36 inches vertically or horizontally and will hang until mid September.

September pick up dates will be determined by the MAPL fall schedule.

The Mars Library and its patrons love seeing your work on the library walls and they thank you for your participation.

Hours: Monday through Thursday - 10 am to 7 pm
 Friday 10am to 3 pm
 Saturday 9am to 4 pm.
 107 Grand Ave, Mars, PA.
 16046

Questions: marcy@zoom-internet.net

Cranberry Artists Network

2024 Calendar

PLEASE NOTE-ALL DATES AFTER THE SPRING SHOW ARE TENTATIVE DUE TO MUNICIPAL BUILDING CONSTRUCTION

June	Plein Air Painting
June 1	New member screening-digital
June 23	Registration for Martinis with Monet ends, 8:59pm
June 30	Notification sent to artists
July	Plein Air Painting
July 3	Martinis with Monet Artwork drop off for show, 4-7pm
July 10	Opening Reception for "Martinis with Monet Art Expo" 7-9pm
August	Plein Air Painting
August 22	Martinis with Monet show ends and art pick up 4-7pm
September	Plein Air Painting
September 3	First Tuesday figure drawing 10am-1pm
September 9	Holiday show prospectus to members
October 1	New Member Screening-digital
October 1	First Tuesday figure drawing. 10am-1pm
October 27	Holiday show registration ends, 8:59 pm.
November 7	Holiday Show art drop off 4-7pm
November 12	First Tuesday figure drawing
November 14	Holiday Show starts
December 3	First Tuesday figure drawing. 10am-1pm
December 5	General Membership Meeting 7-8:30pm
December 19	Holiday Show ends, art pick up 4-7pm

Cranberry Artists Network Members

If you've changed your email or address recently please email Gadi Leshem with updated info

gadile@gmail.com

Cranberry Artists Network

MEMBER NEWS



Gina Judy has two pieces showing at the national show, “Blooms”, in the Rhode Island Watercolor Society show and three pieces accepted into Westmoreland Nationals Arts and Heritage Festival and Westmoreland Community College displays. She was also accepted into the Watercolor Society of Alabama show, juried by Matthew Bird. Her artwork, “Portico At Sandcrest”, has been accepted into the Zanesville Museum of Art 78th Ohio Annual Exhibition. Lastly, she won a special memorial award in the Steubenville Art Association Spring Regional Art Exhibit. Congratulations, Gina!



Lynda Kirby's monotypes and linocut block prints were juried into several regional art shows including

- “Woods Encounter” was a part of the Pittsburgh Print Group “Myth” show at Pullproof Studio in Garfield in April.
- Oglebay Institute's Cross-Currents 2024 Exhibition, April 11-June 14

- Beaver Valley Artists 47th Annual Juried Exhibition at Merrick Art Gallery, April 28-May 9 where she received an Honorable Mention.
- Sweetwater Center she has 5 pieces of art for the Arts Folklore Exhibition display through June 21.
- Westmoreland Arts Nationals Exhibition, May 18-July 2
- The 2024 Southern Alleghenies Museum of Art Biennial Show at Bedford, July 7 through October 20

Lynda also conducted an interactive kitchen printmaking demo at the West Hills Art League member meeting on April 18th, and will also be doing a monotype printmaking demonstration at Bottlebrush Gallery in Zelienople on July 18.

MEMBER NEWS

The Cranberry Artists Network board is looking to fill the positions of Treasurer and Program Chair

Below is a list of the duties for each position.

Treasurer

- A. The Treasurer and a designated board member shall receive and disburse all the funds of the organization under the direction of the Board of Directors.
- B. Be responsible for the maintenance and safekeeping of all financial records of CAN.
- C. Make a financial report at each CAN Board meeting and at any designated business meeting.
- D. Maintain a list of basic yearly expenses and provide the Reimbursement Form to Board Members for Board approved expenses.
- E. Make and record all deposits and payments.
- F. Ensures development and board review of financial policies and procedures.

Program/Education Chair

- A. The Program/Education Chair shall be responsible for arranging programs for the bi-annual General Membership Meetings and other educational events.
- B. Contact Cranberry Township for program dates and available meeting/program spaces.
- C. Provide and receive contracts from artists who are presenting.
- D. Distribute write-ups and information about programs.
- E. The Program/Education Chair will report all information related to programs and education at CAN Board meetings.

Please contact Noele Reynolds at ncrkr@aol.com if you are interested in either position or if you have any questions.

Cranberry Artists Network

MEMBER NEWS



CAN members received five award at this year's West Hills Art league Mother's Day Show! Juror's Choice Best In Show: **Lynda Kirby** - "Life and How to Live it"
First Place: **Patricia Mae Young** - "Simmon's Flower Farm"
Second Place: **Gina Judy** - "Branson Landing After Rain"
Third Place: **Marian Sallade** - "Autumn Glow"
Award of Merit: **Susan Walker** - "Blossoms of Joy"



CAN Award Recipients at the North Hills Art Center Pittsburgh & Beyond Show Opening. **Patricia Mae Young** was awarded 2nd Place for "West End Bridge", **James Tobin** was awarded 4th Place for "Trolley To The South Hills", and **Debra Tobin** was awarded Honorable Mentions for "The Bridge".



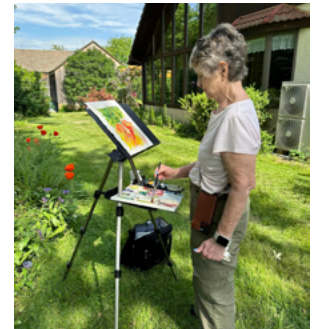
Polly Mills Whitehorn is delighted to announce that her photograph Yocelin with Sunflower has been selected for exhibition in the 51st Annual Hoyt Regional Juried Art Show. Art Curator, Juana Williams served as juror. The exhibit opens on May 21 and will run until July 25. The Opening Reception will take place on Saturday June 15 from 12:00pm-2:00pm in the Main Galleries. The Hoyt Art Center is located at 124 East Leasure Ave. New Castle, PA 16101

Polly Mills Whitehorn is also pleased to announce that Southern Alleghenies Museum of Art selected 2 of her hand-toned photographs for inclusion in Biennial 2024. The exhi it will be on view from July 26-October 20, 2024. SAMA Bedford located at 137 East Pitt St., Bedford, PA 15522. Opening Reception is Saturday, August 17 from 6-8pm.

Cranberry Artists Network

MEMBER NEWS

Thank you CAN President Noele and Randy Reynolds for making this one day Plein Aire group pop up show at Gardners Greenhouse on route 19 happen. It was a beautiful place with so many actives. A well attended event with Food trucks, Amish booths along with ceramics and paintings.



The Plein air group met at the Kretschmann farm in May! Beautiful flowers!

Can Member Award Recipients at the Beaver Valley Artists 47th Annual Juried Art show! Awards were: First Place: **Mary Jane Hadley** “ Play Ball”, Second Place: **Linda Sant’Eufemia** “ Bon Jour”, Third Place: **Mary DeSanzo** “McConnells Mill”, Honorable Mentions: **Jennie Johnstone** “Summer Bouquet” **Lynda Kirby** “Summer Grass” and **Gadi Leshem** “Wish”.



Cranberry Artists Network

MEMBER NEWS

Lynda Kirby and **James Tobin** have been accepted for inclusion in the 89th Annual National Exhibition of the Cooperstown Art Association. This year they had 416 entries submitted, and the Juror of Selection, Thomas Sarrantonio, had a difficult task in choosing 131 works to create a diverse and exciting exhibit which will be on display from July 12 - August 16, 2024.



Susan Walker is offering a Tiny Artist class ages 2-5 June 8 (blacklight) at Curio in Zelienople, PA. This class includes all supplies. \$25. More information and Register at <https://susanwalker.art/product/tiny-artists/>

Susan Walker is also offering Bible Art Journaling Monthly Class. 6-8 pm Portersville, PA, June 7, July 12 More information and Register at <https://susanwalker.art/product/bible-art-journaling/>

A promotional graphic for an art exhibition. The background is a vibrant, abstract painting of flowers in shades of pink, purple, and blue. The text is overlaid on a pink and blue background.

Expressions of Joy
by Susan Walker
June 20 - August 3

Artist Reception and Social:
July 13th 5 - 8 pm
CURIO Art Gallery & Studio
113 N. Main Street Zelienople

A Fair in the Park

September 6 - 8, 2024
Mellon Park, Shadyside

The 55th annual A Fair in the Park will welcome 90+ fine artists and fine craftspeople to Pittsburgh's beautiful Mellon Park, located between the city's eastern neighborhoods of Shadyside and Squirrel Hill. The fair is free to the public and draws strong community support. An estimated 20,000 dedicated visitors enjoy the opportunity to interact with approximately 85 regional and national artists working in a variety of mediums including: clay, fiber, wood, jewelry, glass, leather, metal, mixed media, and two-dimensional art.

Cranberry Artists Network

You're Invited!

West Hills Art League

PLEIN AIR PAINTING EVENT at Roselea Farm! Sunday, June 30 starting at 9am

Please join us for this rare opportunity to paint at the beautiful and historic Roselea Farm. Located in Coraopolis Heights, this beautiful 1905 Tudor mansion is situated on a 32-acre estate and has many art inspiring areas. Choose from the gardens, main house, farmer's cottage, tower house, a large barn, a smaller barn, a commercial greenhouse and even a herd of goats!

Plus, we have invited award-winning author-cartoonist and plein air painter Jared Cullum to join us for the day to share some of his techniques.

We will meet at the big barn at 9:00am and Jared will give a brief talk on plein air painting and give some guidance. Then we will all break out and find our spots to work and he will be available for questions.

If you have never done plein air before, this is the perfect opportunity to start! And, if you are already a seasoned plein air artist, don't miss this opportunity to paint at this amazing location!

So please pack a bagged lunch and plan to spend the day with us! We will have a supply of beverages available in the barn which is decorated with antique furniture and often used for weddings and other events. Restroom facilities will be available. Ample Parking. This event is rain or shine.

Jared Cullum is an award-winning author-cartoonist and plein air painter living in Pittsburgh, PA. He has written and illustrated story and concept art for young adult and children's stories for Jim Henson Productions, IDW, Insight Editions, and others specializing in a hand-painted watercolor style. Jared regularly posts lessons and demonstrations on the YouTube channel "Jared Loves to Draw" and is an avid outdoor painter and teacher of plein air and figure watercolor painting.

**This event is rain or shine. West Hills Art League Members - Free, Non-members \$5.00.
Please register by June 28th on our website: www.westhillsartleague.com (click on "Workshops")**

Cranberry Artists Network



“Time for Me: A Women’s Creative Circle” A Women’s Art Group

Meeting the third Thursday of the month, 6:30-8:30pm

CELEBRATING 12 YEARS!

Facilitator and Leader: MJ McCurdy, Bottlebrush Gallery in Harmony

As women, we all seem to make time for everyone else in our lives– but when is OUR time? **Time for Me** is a way to set aside time for ourselves, to meet new friends and express our inner creativity. At each class, we explore various art forms, learning a different technique each time, then use that technique to express ourselves. **You don't need to have artistic talent to join us.**

Time for Me is an ongoing class meeting at 6:30pm on the third Thursday of the month. You are free to attend one class, two classes, or every class if you would like. **Each class you attend is \$30 and includes all materials needed for the evening.** Women from 13-100 welcome!

2024 Class Meeting Dates:

**February 15, April 18, May 16, June 20, July 18, August 15,
September 19, October 17, November 21**

Please register for classes **in advance** so we have enough supplies available: email bottlebrushgallery@gmail.com or call 724.452.0539.

Bottlebrush Gallery & Center for the Arts
539 Main Street Harmony, PA 16037
www.fb.com/bottlebrushgallery
(724) 452-0539

Cranberry Artists Network

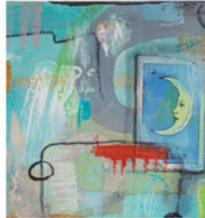
ART EXHIBITION
SEASON 2024



Annie Heisey & Katie Brumberg
March 7- April 20
Art Social: March 16



JASON SHORR
April 25-June 15
Art Social: May 18



Jody Shell & Kyle Houser
August 8- September 14
Art Social: August 10

CURIO Art Gallery
113 N. Main St. Zelienople
curiocol.com



Susan Walker
June 20- August 3
Art Social: July 13



"Eccentric Shadows"
September 19- October 26
Art Social: October 5



Art Socials for each show are from 5-8pm and are free and open to everyone!

GROUP A NOW 2024

June 7 - June 30, 2024

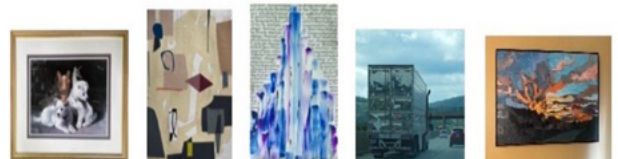
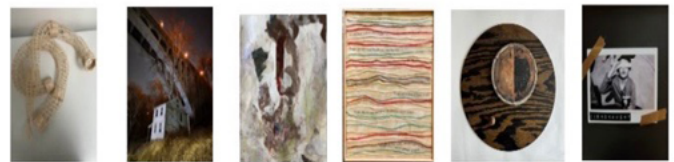
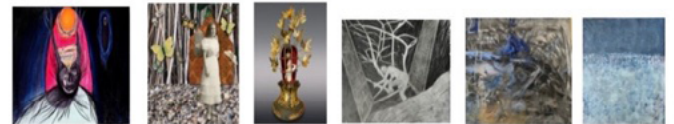
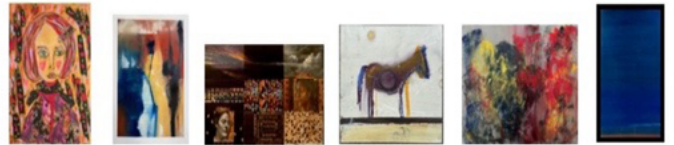
Spinning Plate Gallery, 5821 Baum Blvd., Pittsburgh, PA 15206

OPENING RECEPTION: FRIDAY, JUNE 7, 6-9 PM

Gallery Hours: June 8 - June 29

Fridays 1 - 7 pm

Thursday, Saturday, Sunday 1 - 5 pm



CURIO ART GALLERY AND STUDIO

113 N. Main Street
Zelienople, PA 16063



HEY C.A.N.
MEMBERS.
WANT TO
TEACH...

art classes?

We're looking to hire artists to teach classes in our studio and to help further our community's engagement and appreciation of the visual arts. Workshops, ongoing classes, series, events, etc. Interested???

Email us at: curio@curiocol.com

Cranberry Artists Network

THE
PRINT
CENTER
99TH ANNUAL

PHOTOGRAPHY
AND PRINTMAKING

DEADLINE:
JUNE 17, 2024

Juried Exhibition

Deadline to Apply:
June 17, 2024

The Print Center announces its 99th ANNUAL International Competition.

The ANNUAL is one of the oldest and most prestigious competitions in the United States. Open to local, national and international artists,

The Print Center is particularly interested in highlighting the use of photography and/or printmaking in new and intriguing ways, both in content and process.

Any artist using Photography and/or Printmaking as critical components in their work can enter.

Artists whose work pushes the boundaries of traditional photographic and printmaking practices are encouraged to enter.

2D and 3D works are eligible.

Entry Fee: \$45 – for up to five single images or videos

<https://printcenter.org/100/99th-annual/>



Juried Exhibition

Deadline to Apply:
June 19, 2024

MFA (Maryland Federation of Art) invites all artists to enter an exhibition that welcomes printmaking artwork for Maryland Hall's Earl Gallery. This exhibition is open to artists residing in the United States, Puerto Rico, Canada, and Mexico. All eligible fine art entries in any media will be considered by the juror. Selected works will be displayed in this MFA organized exhibition at Maryland Hall in Annapolis, MD from August 21 – September 25, 2024.

Juror: Elizabeth Rudy - Carl A. Weyerhaeuser Curator of Prints at Harvard University

1 or 2 entries \$45 (MFA Members \$30). Up to 4 additional entries \$6.75 each (MFA Members \$4.50). Entry fees are non-refundable.

<https://mdfedart.com/portfolio/impt/>

Cranberry Artists Network



Upcoming Workshops

SCOTT HUNTER

One day Abstract Water Media Workshop
June 22, 2024, 9:30 A.M. – 4:00 P.M



Wilkins School Community Center

7604 Charleston Ave. Wilkinsburg, PA. 15218

COST: PWS Members: \$60

Non-Members: \$75

To view course description, supplies list, obtain a printable flyer, and/or to register:

<https://www.pittsburghwatersociety.com/event-5659820>

(Online Registration: April 15 - June 15, 2024, 11:59 P.M. Mailed Payments postmarked by June 12, 2024.)

LAURIE GOLDSTEIN-WARREN

Weekend Limited Palette Portrait Workshop
Paint Transparent Watercolor
Portraits Using Only 4 Colors!!!!



Saturday & Sunday, September 21 & 22, 2024,
9:30 – 4:00 P. M.

Stifel Fine Arts Center

1330 National Rd. Wheeling, WV. 26003

COST: PWS Members: \$210

Non-Members: \$250

To view course description, supplies list, obtain printable flyer, and/or to register:

<https://www.pittsburghwatersociety.com/event-5667453>

(Online Registration: April 15 - September 7, 2024, 11:59 P.M. Mailed Payments must be postmarked by September 3, 2024)

Center for Contemporary Printmaking

Juried Exhibition

Deadline to Apply:
July 1, 2024

This deadline is for Session 1 (Winter): December - February. Artists applying may request a one or two week stay during these periods.

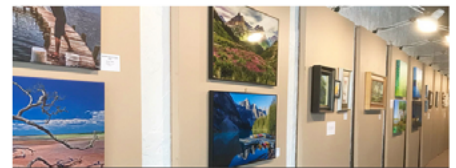
The Center for Contemporary Printmaking (CCP) Residency Program offers Artists-in-Residence the unique opportunity to live and work inside the recently remodeled Helen Frankenthaler Printmaking Cottage.

The intention of the residency is to offer artists one to two weeks of uninterrupted, 24/7 time and privacy in a well-equipped studio with onsite living accommodations.

Artists-in-residence will have the opportunity to conduct a studio talk or workshop for the Norwalk community and greater New York metropolitan area.

\$35.00 application fee.

<https://contemprints.org/artist-in-residence-program/residency-application/>



Juried Exhibition

Deadline to Apply:
August 24, 2024

The Joe Center for the Arts will be featuring works in drawing, painting, and printmaking from 9/27/24 to 10/25/24. After all, they relate to each other in any number of ways and many artists excel in all three areas. All types of drawing, printmaking and painting media/ techniques may be submitted including watercolor, oil, acrylic, pastel, pencil, pen and ink, relief printmaking, mono print, screen print, etching, etc. So, sharpen your pencils, load your brush, ink your plates and submit your most inspired creations for jury consideration.

<https://thejoecenterforthearts41.wildapricot.org/Call-for-Entries>

Cranberry Artists Network

THE MANOS GALLERY
PRESENTS

COLORLESS PIGMENTATION

OPENING THIS JULY



320 E 5th Ave Tarentum PA

CALL FOR ARTISTS
CONTACT THE MANOS GALLERY
MANOSGALLERY@YAHOO.COM

FIBERARTS GUILD OF PITTSBURGH



MEMBERS EXHIBITION

APRIL 4, 2024 – JANUARY 19, 2025



ERIE ART MUSEUM CUSTOMS HOUSE GALLERY

101ST ANNUAL • ERIE ART MUSEUM SPRING SHOW

Show Dates: March 15 to August 9, 2024

Cranberry Artists Network

Our Mission

Cranberry Artists Network was organized by artists to promote an awareness about the value of the arts. Our mission is to build a vibrant appreciation for the arts by connecting artists and their skills with the community.

General Information

Website

www.CranberryArtistsNetwork.com

Facebook

[@CranberryArtistsNetwork](https://www.facebook.com/CranberryArtistsNetwork)

A members-only page is available at <https://www.facebook.com/groups/CranberryArtistsMembers/>, or search for CAN Members

Cranberry Artists Network Board

Noele Reynolds	President
James Tobin	Vice President
Colleen Tittiger	Secretary
Marcy Bogdanich	Treasurer

CAN Chairs

Vickie Schilling	Exhibition
Open	Programs
Gadi Leshem	Membership
Kathy Bischak	Publicity
Debra Tobin	Internal Communication (Newsletter)
Lynda Kirby	Print Media
Colin Richards	Website

Founding Members Emeritus

Irene Ackerman
[Duane Cacali](#)
Mary Jane Hadley
Mary Mason
Elise McVeigh

Cranberryartistsnetwork@gmail.com

Postal Address

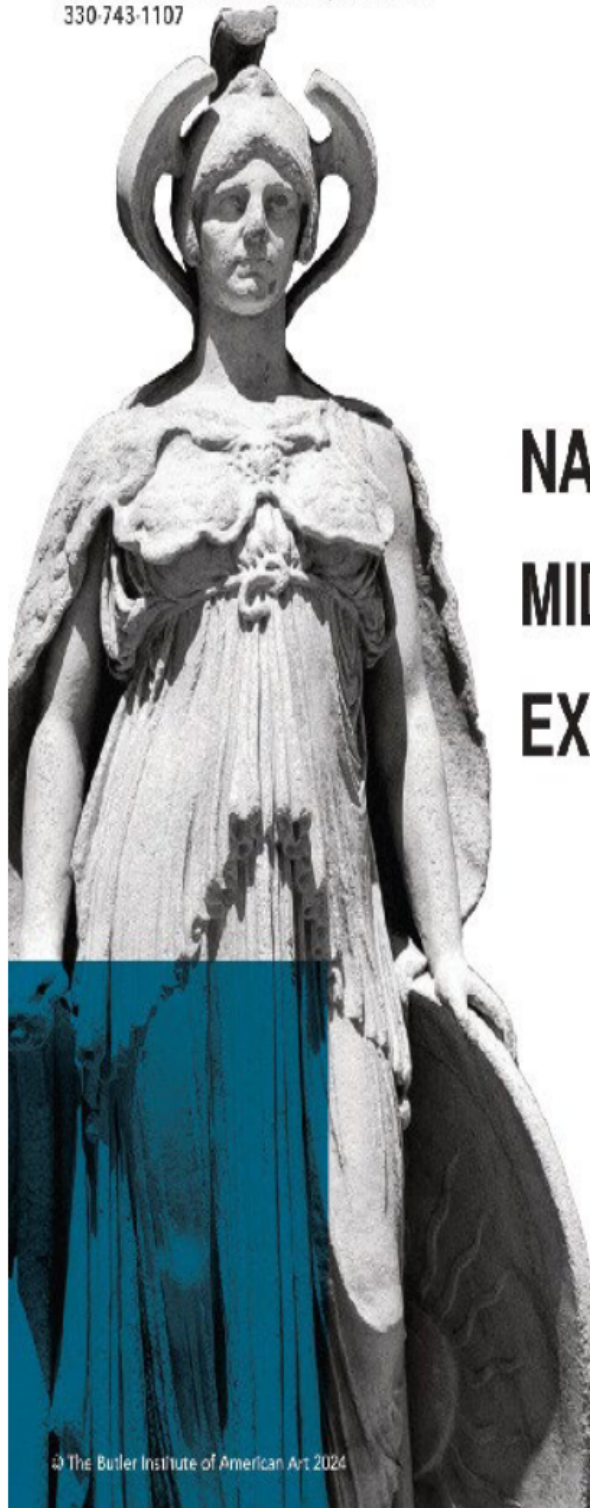
PO Box 1476, Cranberry Twp, PA 16066

Please send newsletter submissions to
debratobin@ymail.com

The Butler Institute

OF AMERICAN ART

524 WICK AVE. • YOUNGSTOWN, OH 44502
330-743-1107



NATIONAL
MIDYEAR
EXHIBITION

JUNE 23, 2024

Opening reception
and award
announcement

AUGUST 11, 2024

Exhibition closes

Submit entries online at
www.butlerart.com